

# Technical Rider - Public Relation/Caterina Sagna Dance Company

## Lighting:

The following is the typical hang for our show (see light plot page). Equipment to focus the plot (Genie, ladders etc) should be available at all times.

Light computer 48 circuits  
8 Dimmer 6 X 2,5

29 PC 1kW with barndoors  
7 PC 2KW with barndoors  
10 PAR CP62 with frame  
14 50° profile  
10 15-45° profile  
2 Blondes (wide flood) 2kW  
1 Follow spot  
10 Stand/ ballet tower h=1.70m

## Gels Lee et Rosco(#):

004 : 4X PAR  
013 : 4X PAR, 2X PC  
017 : 2X PC  
061 : 15X PC  
068 : 1X PC2kW  
100 : 1X PC2kW  
106 : 1X PC2kW  
134 : 1X PC2kW  
138 : 2X PC  
140 : 4Xprofile, 1 PC2kW  
147 : 1X PAR  
169 : 3X profile.  
174 : 1X profile.  
176 : 1X PC2kW  
197 : 2X PC  
201 : 1X profile. 2X PC  
230 : 2X PC, 1X PAR  
241 : 1X PC2kW, 1X profile.  
245 : 10X profile  
228 : 8X PC, 3X PC2kW  
725 : 4X profile., 2X PC  
#114 for all projectors

## Stage:

Minimum stage size must be atleast 12 meters wide and 10 meters deep 7,50m high.

Dance floor and black dance carpet.

5 Wings : Italian black masking (black leg and border seting) is needed.

We need a 2x0,80m table, 7 chairs, 2 bar stools, a roll of white gaffer tape, 100 x A4 white paper, 10 bottles(0,50l) of water with plastic glasses, 2 "portants" with weels for hanging the costumes.

The dancers smoke on stage.

## Sound:

### **P.A. F.O.H. System L-C-R + Sub (1° Delay line x 4ch delay)**

4 Nexo PS15 L-R  
2 Nexo PS8-10 Centre  
2 Sub

or

4 d&b E6 L/R + sub  
2 d&b E3 centre

### **Upstage**

2 Nexo PS 15  
ou  
2 d&b E6

If the length of the audience exceed 10 meters,,  
P.A. on the audience L-R Fly (2° Delay line x 2ch delay)  
2 Nexo PS 15/10

### **Sound mixer**

01v Yamaha Digital  
ou console équivalente (On doit pouvoir séparer les sub par sous-groupes ou aux.)  
12 ch, 4 sub, Eq 4 bandes semiparametr.. LPF (low pass filter)  
6 lignes à retard, 1 Multieffects PCM 70/80 Lexicon.

### **Equalization**

7ch EQ 1/3 oct : Klark T DN 360

### **Microphones**

1 Micro HF sennheiser EW evolution handle with Neumann KMS 105  
4 Micro PCC 160 Crown

### **CD player**

2 CD player with Auto-Cue

## Wardrobe:

A costumer is needed the day of the performance for ironing.

## Dressing Rooms:

Dressing rooms for 7 dancers, with toilets, showers, sinks, and dressing mirrors.

## Shedule

### **Settings the day before the performance. Light, sound, stage.**

9-13 set up of Light, sound and stage

14-18 “

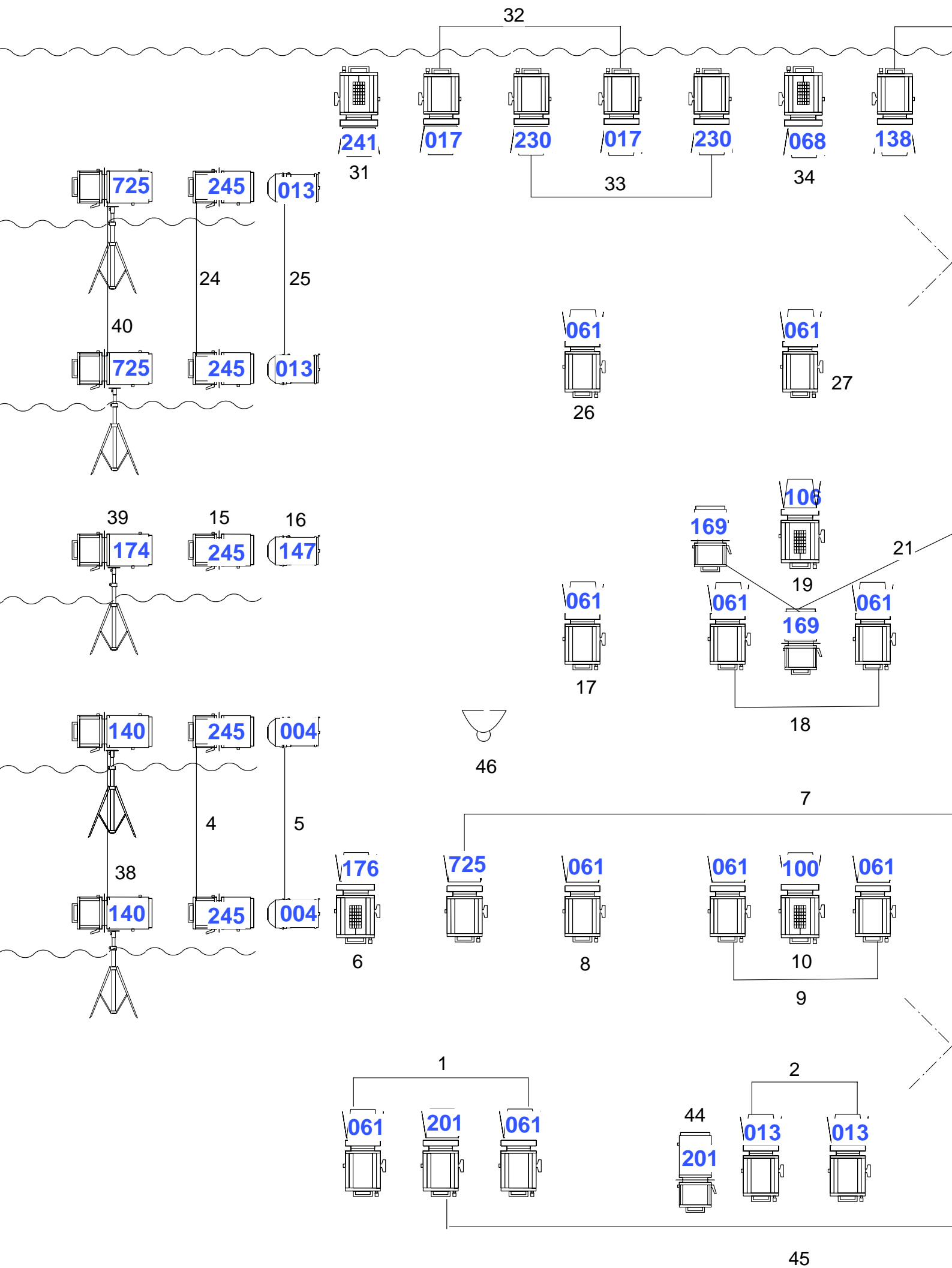
19-23 Focus

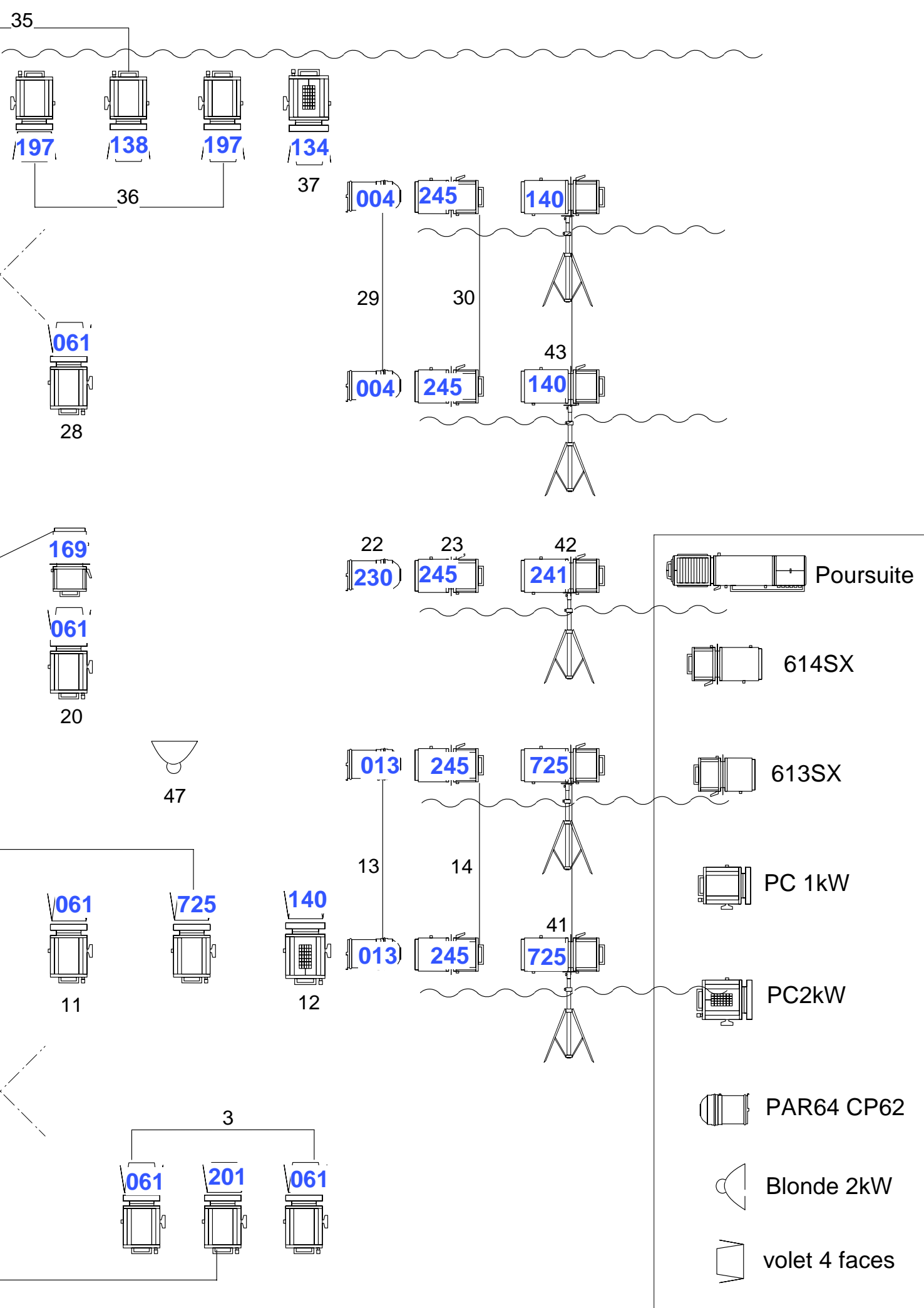
### **The day of the show**

9-13 Light Cues and Sound balance

14-19 Rehearsal

20h30 Performance





Relation Publique, Caterina Sagna

1/50°

1m